

NEW WESTMINSTER BASEBALL ASSOCIATION
FIELD PREP GUIDELINES FOR JMF – MINOR/MAJOR

Pre-Game Field Prep

- **Unlock the Gates (Batting Cage, Main Gate, Dugouts).** Lock the padlocks to the fence.
- **Start with removing the tarps** (home and mound)
 - Remove the pins and put them in the middle of the tarp, fold it like a pie, drag them out of the field behind the home team dugout.
- **Remove the rubber mats from the batter's boxes and pitcher's mound.**
 - Store on the grass at the backstop as shown in the picture below.



- **Rake the home plate circle with a 36" rake**, the goal is a smooth and level surface at home plate.
- **Rake the 3rd Base and 1st Base lines.**
 - If a previous games chalk line is well defined, leave it as is and rake along the sides of it.
 - If the previous games chalk line is well worn, then work on erasing/removing and spreading around the chalk. Rake the basepath and 3' on each side of the baseline. Then do three passes parallel to the baseline.
- **Rake the remaining infield.** (This can be done before, during or after lining the base paths.) Drag the rakes behind you and run parallel with the baselines going from 3rd to 1st and back until the entire infield skin has been raked.
- **Grab the infield Lining Equipment from lining equipment room.** 5-gallon pail of lime (½ full), small bucket or scoop, Chalking Machine (empty), Stringline with spike, Mallet or sledge hammer,
- **Grab the bases (labelled M900 bases for JMF) from the main equipment room**

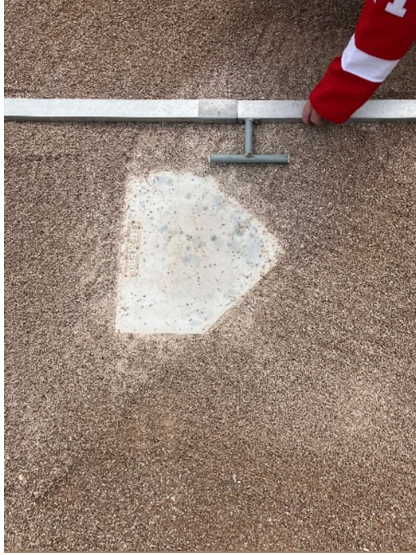


Bring the bases to the field and install the bottom half into the anchors in the ground. Leave the top half off until lining the field is complete. Put the orange anchor caps on top of the tarps.

NEW WESTMINSTER BASEBALL ASSOCIATION
FIELD PREP GUIDELINES FOR JMF – MINOR/MAJOR

- **Line the batter's box.**

- Fill the lining machine ¼ full at the home plate location.
- Grab the template and place as shown. Ensure it is parallel with the edges of home plate. Stand back behind home plate and look toward the pitcher's mound to double check



- Trace or tamp down the template as shown



NEW WESTMINSTER BASEBALL ASSOCIATION
FIELD PREP GUIDELINES FOR JMF – MINOR/MAJOR

- Set the machine to **2"** and Line the box as shown in the next two photos.



- **Line 1st and 3rd Infield Foul lines.**

- Drive a spike on the stringline at the Apex of home plate.



- Run the stringline all the way to the edge of the infield and ensure the string is straight with the outside edge of the base (or baseline survey pin)

NEW WESTMINSTER BASEBALL ASSOCIATION
FIELD PREP GUIDELINES FOR JMF – MINOR/MAJOR

- Run the machine so that all 2” of lime is inside the fair territory.



- Run the machine all the way to the grass and stop at the Grass.
- If necessary, paint outfield foul lines. See notes below
- Repeat the first four steps above for 3rd Base

- **Line 1st and 3rd Outfield Foul lines** (*only needed once or twice during a tournament*)

- Using the string from the infield foul lines, run the string all the way to the outfield foul pole.
- Grab the line painting machine and a can or two of white athletic paint. Install the can so that the spray line is wide and spray grass with paint, ensuring to make as straight of a line as possible following the string.



Post Game Cleanup – last game of the day

- Repair the Pitchers Mound (Special instructions or training required)
- Rake the batter's box flat and level
- Replace the Rubber Mats (one on the pitcher's mound, 2 on the batters boxes)
- Cover the Home Plate and Pitchers mound with tarps.
- Return the M900 bases to the correct shelf and replace the orange anchor covers.
- Lock all the gates (including home and away dugout)