

NEW WESTMINSTER BASEBALL ASSOCIATION
FIELD PREP GUIDELINES FOR JMF – ROOKIE LEVEL

Pre-Game Field Prep

- **Unlock the Gates (Batting Cage, Main Gate, Dugouts).** Lock the padlocks to the fence.
- **Start with removing the tarps** (home and mound)
 - Remove the pins and put them in the middle of the tarp, fold it like a pie, drag them out of the field behind the home team dugout.
- **Remove the rubber mats from the batter's boxes and pitchers mound.**
 - Store on the grass at the backstop as shown in the picture below.



- **Is there standing water on the infield? If no, skip to “Rake the home plate”. If yes, see below:**
 - For $\frac{3}{4}$ ” deep or deeper, use the black sump pump with the blue layflat hose and the 100’ extension cord and pump the water off the playing surface or into a 5 gallon pail.
 - For $\frac{1}{2}$ ” deep or shallower, use the orange Shop Vac and 100’ extension cord and vacuum off the puddles. Empty the shop vac canister outside of the playing field.
 - Once all visible water has been removed, apply the Turface field conditioner to the wet locations and rake level.
 - Coil up the hose and extension cord and put them back to their storage location.
- **Rake the home plate circle with a 36” rake**, the goal is a smooth and level surface at home plate.
- **Rake the 3rd Base and 1st Base lines with a 36” rake**
 - If a previous games chalk line is well defined, leave it as is and rake along the sides of it.
 - If the previous games chalk line is well worn, then work on erasing/removing and spreading around the chalk. Rake the basepath and 3’ on each side of the baseline, raking away from the grass. Then do three passes parallel to the baseline.
- **Rake the remaining infield.** (This can be done before, during or after lining the base paths.) Drag the rakes behind you and run parallel with the baselines going from 3rd to 1st and back until the entire infield skin has been raked.
- **Grab the infield Lining Equipment from lining equipment room.** 5-gallon pail of lime ($\frac{1}{2}$ full), small bucket or scoop, Chalking Machine (empty), String-line with spike, Mallet or sledge hammer,

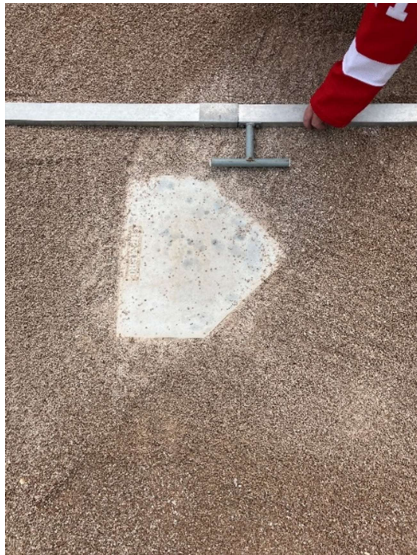
NEW WESTMINSTER BASEBALL ASSOCIATION
FIELD PREP GUIDELINES FOR JMF – ROOKIE LEVEL

- **Grab the bases (labelled M900 bases for JMF) from the main equipment room**



Bring the bases to the field and install the bottom half into the anchors in the ground. Leave the top half off until lining the field is complete. Put the orange anchor caps on top of the tarps.

- **Grab the pitching machine from the main equipment room**
 - Bring a tape measure, 3lb sledge and weights, chains or 8” spikes to secure the machine.
 - Place the machine 40’ from the Apex of home plate and on a centerline between home and 2nd base.
 - The Head Coach, Umpire in Chief or some other designated person will setup the pitching machine speed and pitching height.
- **Line the batters box.**
 - Fill the lining machine ¼ full at the home plate location
 - Grab the template and place as shown.



NEW WESTMINSTER BASEBALL ASSOCIATION
FIELD PREP GUIDELINES FOR JMF – ROOKIE LEVEL

- Trace or tamp down the template as shown



- Set the machine to **2"** and Line the box as shown in the next two photos.



-



NEW WESTMINSTER BASEBALL ASSOCIATION
FIELD PREP GUIDELINES FOR JMF – ROOKIE LEVEL

- **Line 1st and 3rd Infield Foul lines**

- Drive a spike on the stringline at the Apex of home plate



- Run the stringline all the way to the edge of the infield and ensure the string is straight with the outside edge of the base (or baseline survey pin)
- Run the machine so that all **2"** of lime is inside the fair territory



- Run the machine all the way to the grass and stop at the Grass.
- If necessary, paint outfield foul lines. See notes below
- Repeat the first four steps above for 3rd Base

NEW WESTMINSTER BASEBALL ASSOCIATION
FIELD PREP GUIDELINES FOR JMF – ROOKIE LEVEL

- **Line 1st and 3rd Outfield Foul lines** (*only needed once or twice during the tournament*)
 - Using the string from the infield foul lines, run the string all the way to the outfield foul pole.
 - Grab the line painting machine and a can of white athletic paint and spray grass with paint, ensuring to make as straight of a line as possible following the string.



Post Game Cleanup

- Repair the Pitchers Mound (Special instructions or training required)
- Rake the batter's box flat and level
- Replace the Rubber Mats (one on the pitcher's mound, 2 on the batter's boxes)
- Cover the Home Plate and Pitchers mound with tarps
- Return the M900 bases to the correct shelf and replace the orange anchor covers.
- Lock all the gates (including home and away dugout)