

NEW WESTMINSTER BASEBALL ASSOCIATION
FIELD PREP GUIDELINES FOR MP1 – MINOR/MAJOR

Pre Game Field Prep

- **Rake/Level the home plate circle with a 36” rake.**
 - The goal is to have a smooth and level surface around the home plate. This may require the tamping tool and 14” rake or shovel to add ½”-1” of sand into the batter’s box and tamp it down.
- **Rake the 3rd Base and 1st Base lines with a 36” rake**
 - If a previous games chalk line is well defined, leave it as is and rake along the sides of it.
 - If the previous games chalk line is well worn, then work on erasing/removing and spreading around the chalk. Rake the basepath and 3’ on each side of the baseline.
- **Rake the remaining infield.** (This can be done before, during or after lining the base paths.) Drag the rake (or drag mat) behind you and run parallel with the 1st and 3rd baselines and going in a circle from the baselines in toward the pitcher’s mound until the entire infield has been raked. Rake the foul territory if time permits.
- **Grab the infield Lining Equipment from lining equipment room.** 5-gallon pail of lime (½ full), small bucket or scoop, Chalking Machine (empty), Stringline with spike, Mallet or sledge hammer,
- **Grab the bases (from the left side of shelf labelled MP4/MP1) from the main equipment room**



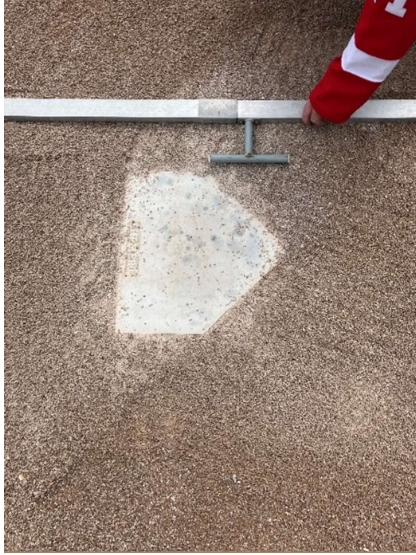
*****Note that 2nd Base for MP1 requires the M900 style like the ones used on JMF*****

- Bring the bases to the field and install the bottom half into the anchors in the ground. Leave the top half off until lining the field is complete. Put the orange anchor caps on the shelf where the bases came from.
- **Grab the 2 pc. portable pitching mound from the batting cage (and the blue dolly)**
 - Bring a 90’+ tape measure.
 - Place the mound so that the apex of home plate is 46’ from the center of the pitchers plate thmachine 40’ from the Apex of home plate and on a centerline between home and 2nd base.



NEW WESTMINSTER BASEBALL ASSOCIATION
FIELD PREP GUIDELINES FOR MP1 – MINOR/MAJOR

- **Line the batters box.** (pictures below from JMF but same process)
 - Fill the lining machine ¼ full at the home plate location.
 - Grab the template and place as shown. Ensure it is parallel with the edges of home plate. Stand back behind home plate and look toward the pitcher's mound to double check.



- Trace or tamp down the template as shown



NEW WESTMINSTER BASEBALL ASSOCIATION
FIELD PREP GUIDELINES FOR MP1 – MINOR/MAJOR

- Set the machine to **2"** and Line the box as shown in the next two photos.



-



- **Line 1st and 3rd Infield Foul lines**

- Drive a spike on the stringline at the Apex of home plate



- Run the stringline all the way to the edge of the infield and ensure the string is straight with the outside edge of the base (or baseline survey pin)

NEW WESTMINSTER BASEBALL ASSOCIATION
FIELD PREP GUIDELINES FOR MP1 – MINOR/MAJOR

- Run the machine so that all **2”** of lime is inside the fair territory



- Run the machine all the way to the grass and stop at the Grass.
- If necessary, paint outfield foul lines. See notes below
- Repeat the first four steps above for 3rd Base.

- **Line 1st and 3rd Outfield Foul lines** *(only needed once or twice during the tournament)*

- Using the string from the infield foul line, run the string all the way to the outfield fence. Ensure the string is straight and runs along the outside edge of the base.
- Grab the line painting machine and a can or two of white athletic paint. Install the can so that the spray line is wide and spray grass with paint, ensuring to make as straight of a line as possible following the string.



NEW WESTMINSTER BASEBALL ASSOCIATION
FIELD PREP GUIDELINES FOR MP1 – MINOR/MAJOR

Post Game Cleanup – last game of the day

- Return the pitching mound to the batting cage.
- Rake the batter's box flat and level
- Return the bases to the correct shelf and replace the orange anchor covers.

